



Australian Government

Australian Transport Safety Bureau

# Human Factors Investigation at the ATSB

## Mike Walker

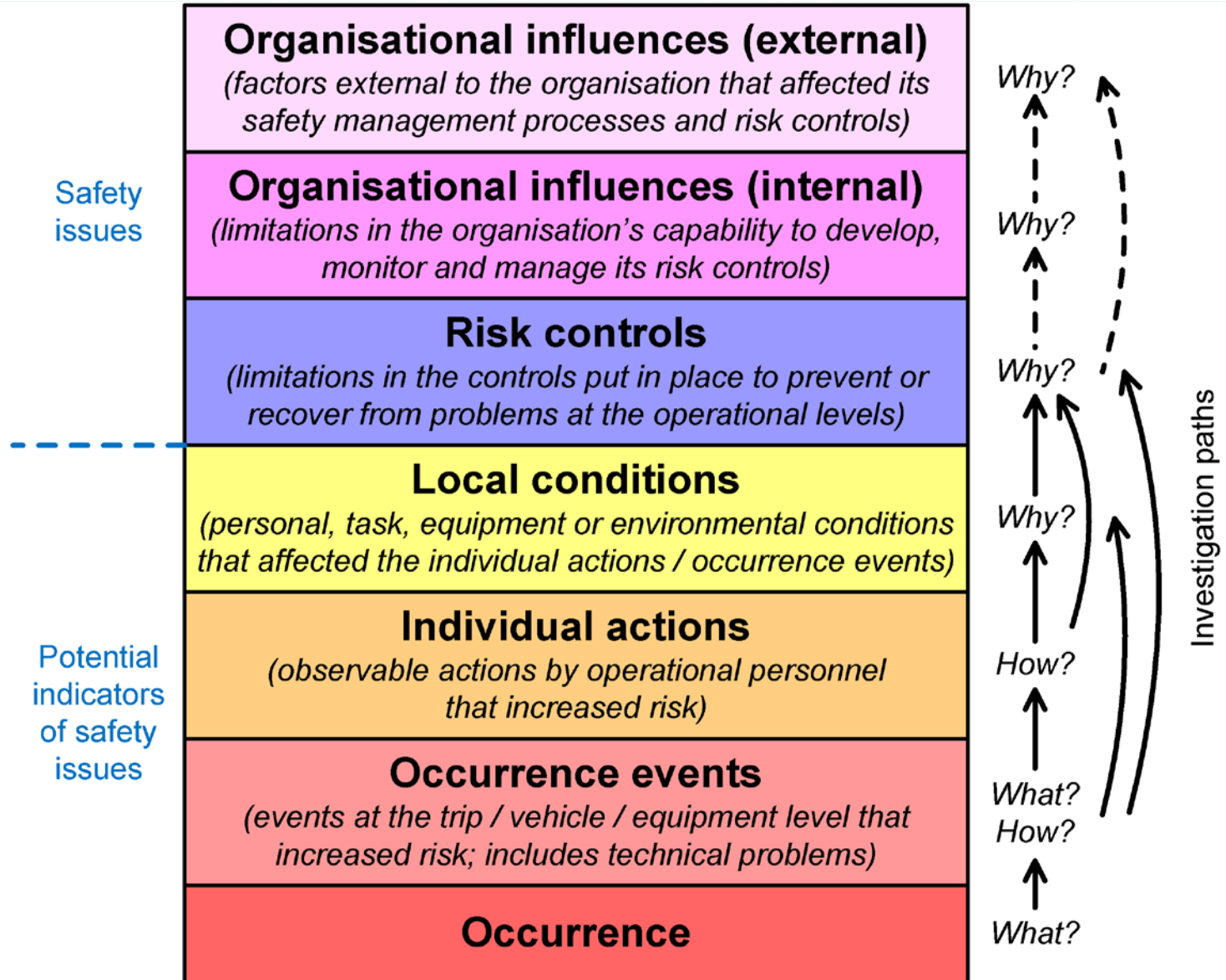
Australia's national transport safety investigator

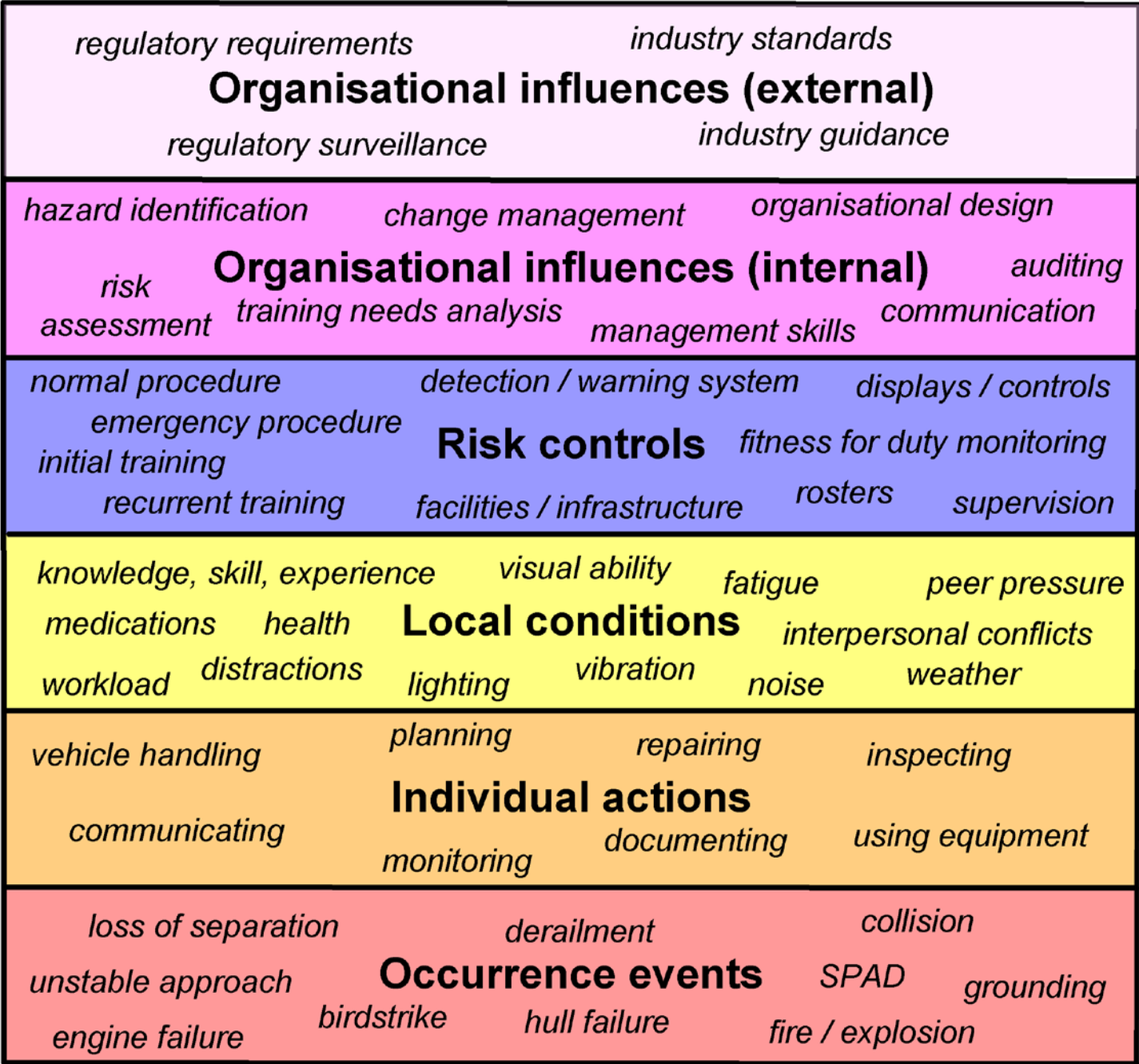
AVIATION | MARINE | RAIL

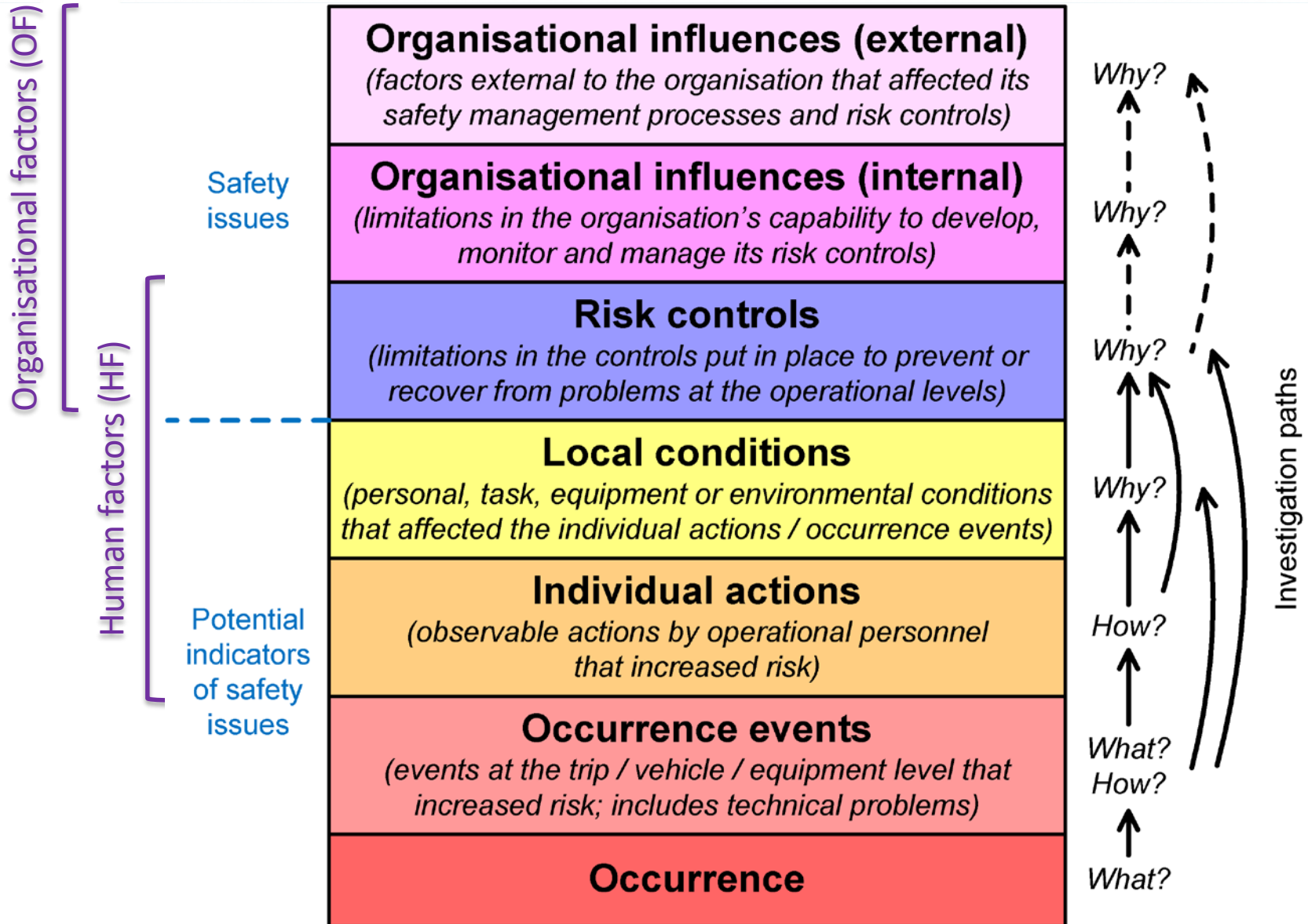
[www.atsb.gov.au](http://www.atsb.gov.au)

# Human factors (HF)

- Aims to improve the interaction between people and their work environment in order to enhance safety, system performance and well-being
- Involves considering many aspects – cognitive, task, physiological, emotional, social, environmental, ...
- Overlaps with (but different to) the study of organisational factors (OF)







# HF investigation

- Applies human factors knowledge, principles and methods to the investigation of accidents and incidents
- Seeks to explain the individual actions that increased risk
- Needs to be integrated with investigation of operational / technical factors
- Provides a different perspective
- Does not involve dream analysis, counselling, séances, or anything you see on TV shows like the *The Mentalist*

# Who should do HF investigation?

- Domain investigator + HF investigator = best outcome
- Every trained investigator should be able to collect basic HF information
- For major investigations, or when there are significant HF aspects: HF investigator should be part of team as early as possible
- When there are potential HF findings: HF investigator should be involved in analysis and write-up of HF information

# ATSB HF investigators

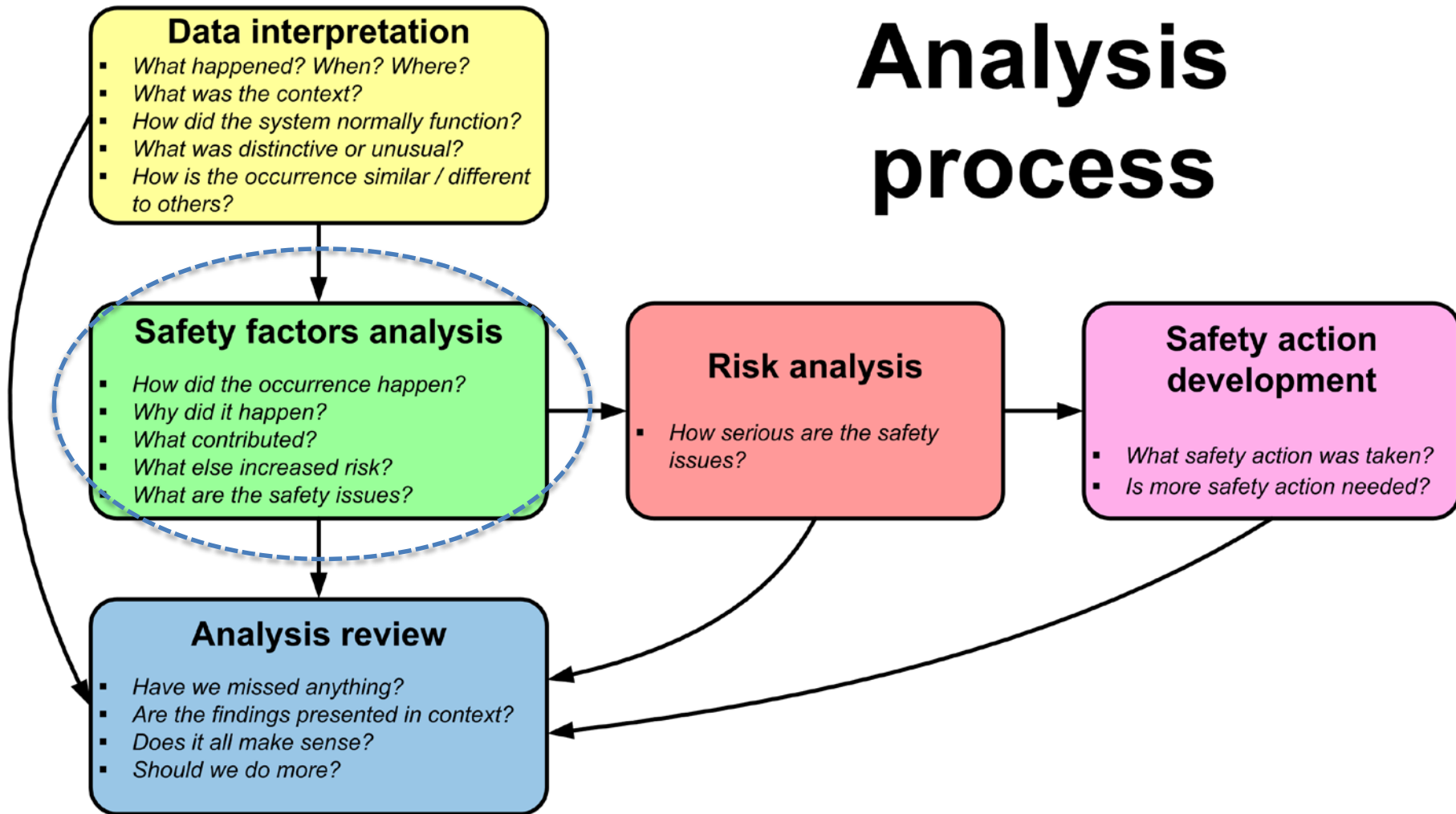
- 5 HF investigators (+3 in management roles)
- Distributed throughout 8 investigation teams
- Variety of skills and backgrounds
- Work on aviation, marine, rail investigations
- Can be IIC, team member, reviewer
- Often involved in training, research, other projects



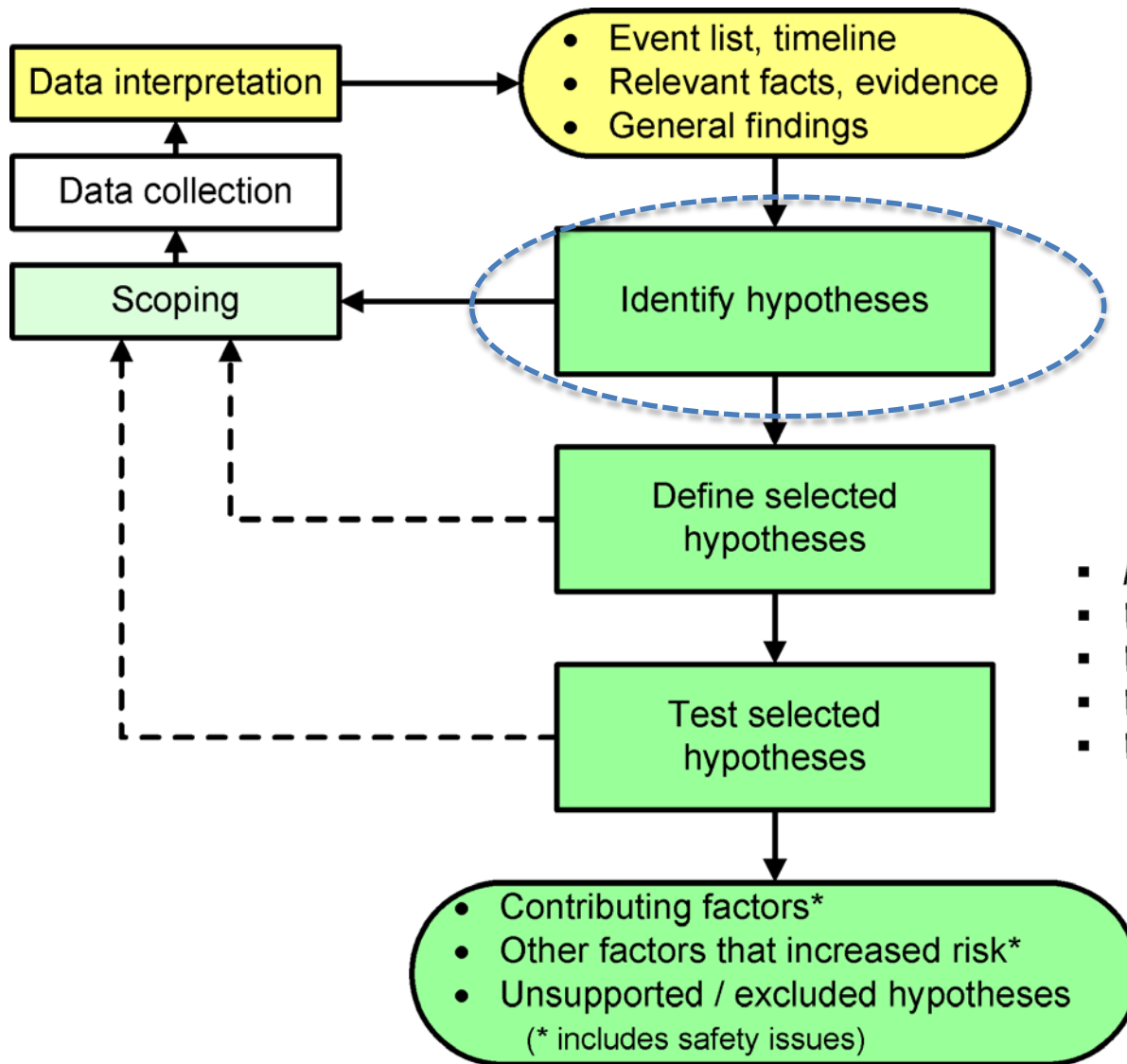
# HF analysis

- Need a structured, systematic method to conduct analysis of evidence
  - definitions of key terms
  - a model of accident development
  - defined process for identifying and testing hypotheses
  - guidance, tools
  - policies, management support

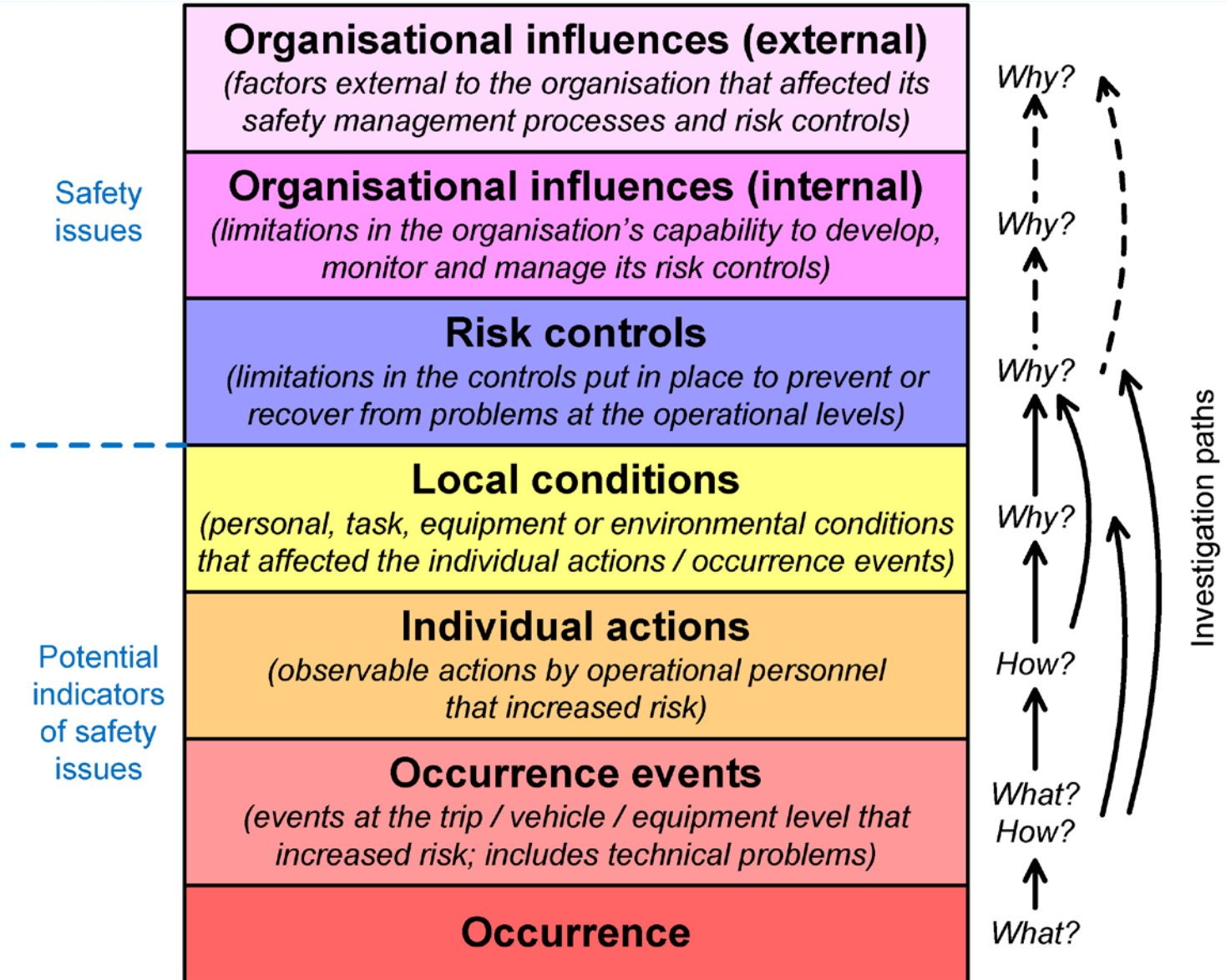
# Analysis process



# Safety factors analysis



- *How did the occurrence happen?*
- *Why did it happen?*
- *What contributed?*
- *What else increased risk?*
- *What are the safety issues?*

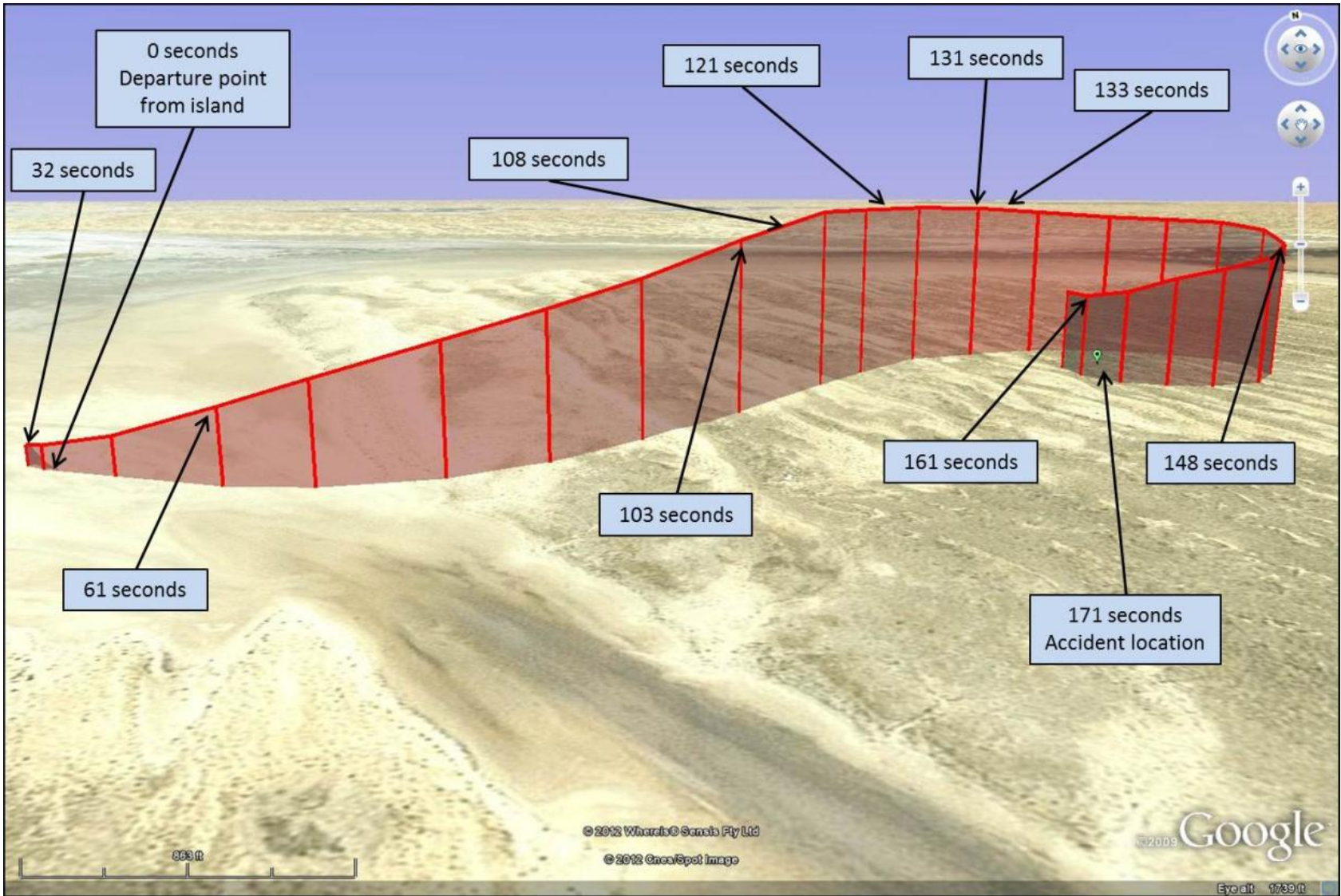


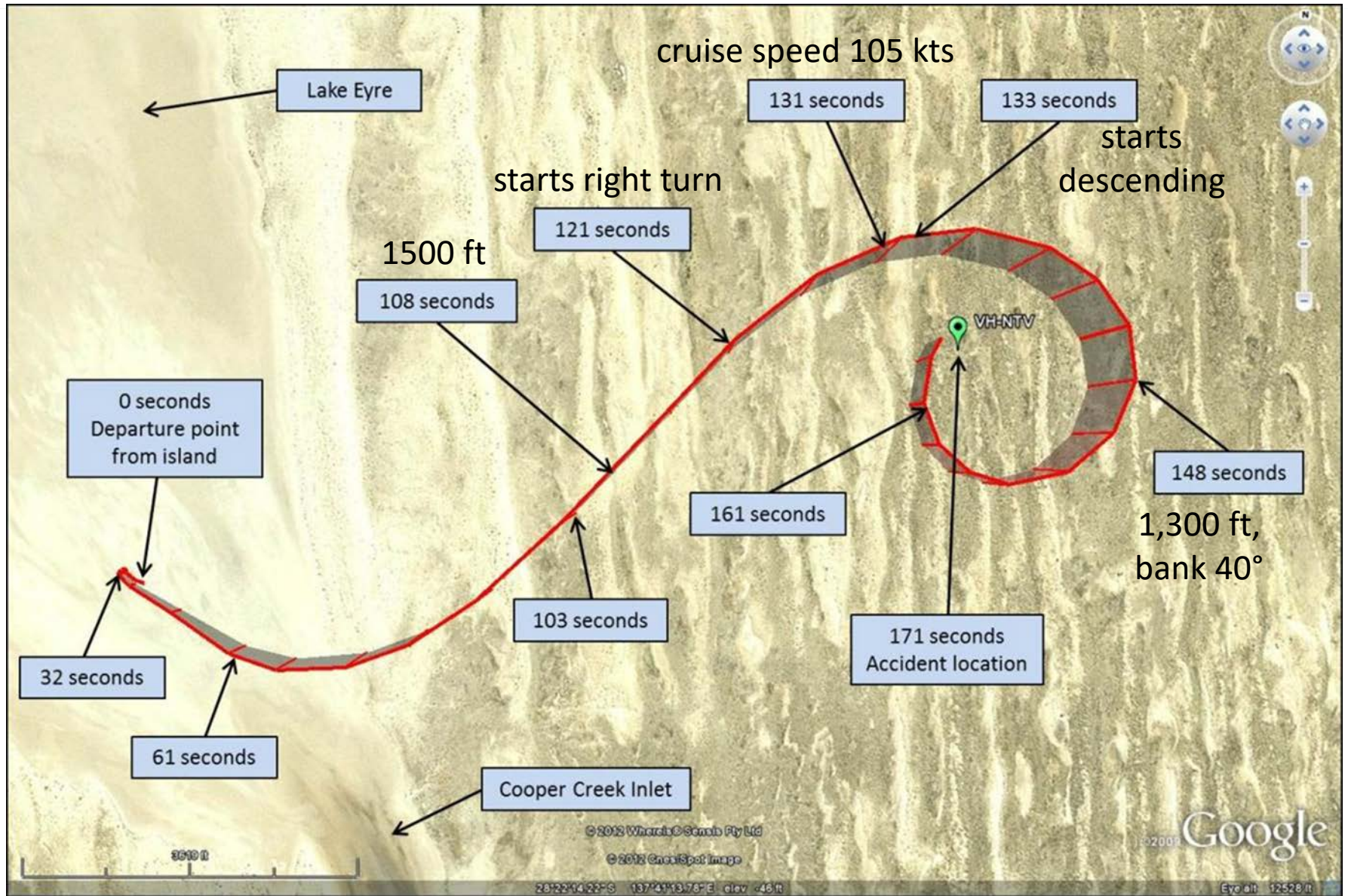
# Sample questions

- *Why did the action make sense to the person at the time?*
- *What aspects of the local context made it difficult to perform tasks effectively?*
- *What was the 'error type'? What factors are commonly associated with this error type and were potentially relevant this time?*
- *What local conditions were unusual (compared to normal operations)?*
- *What local conditions changed in the period prior to when the action occurred?*
- *Would other individuals in the same type of situation perform the same way?*
  - *Yes: what task / environmental / system conditions make us think this?*
  - *No: what differences between this individual and others make us think this?*

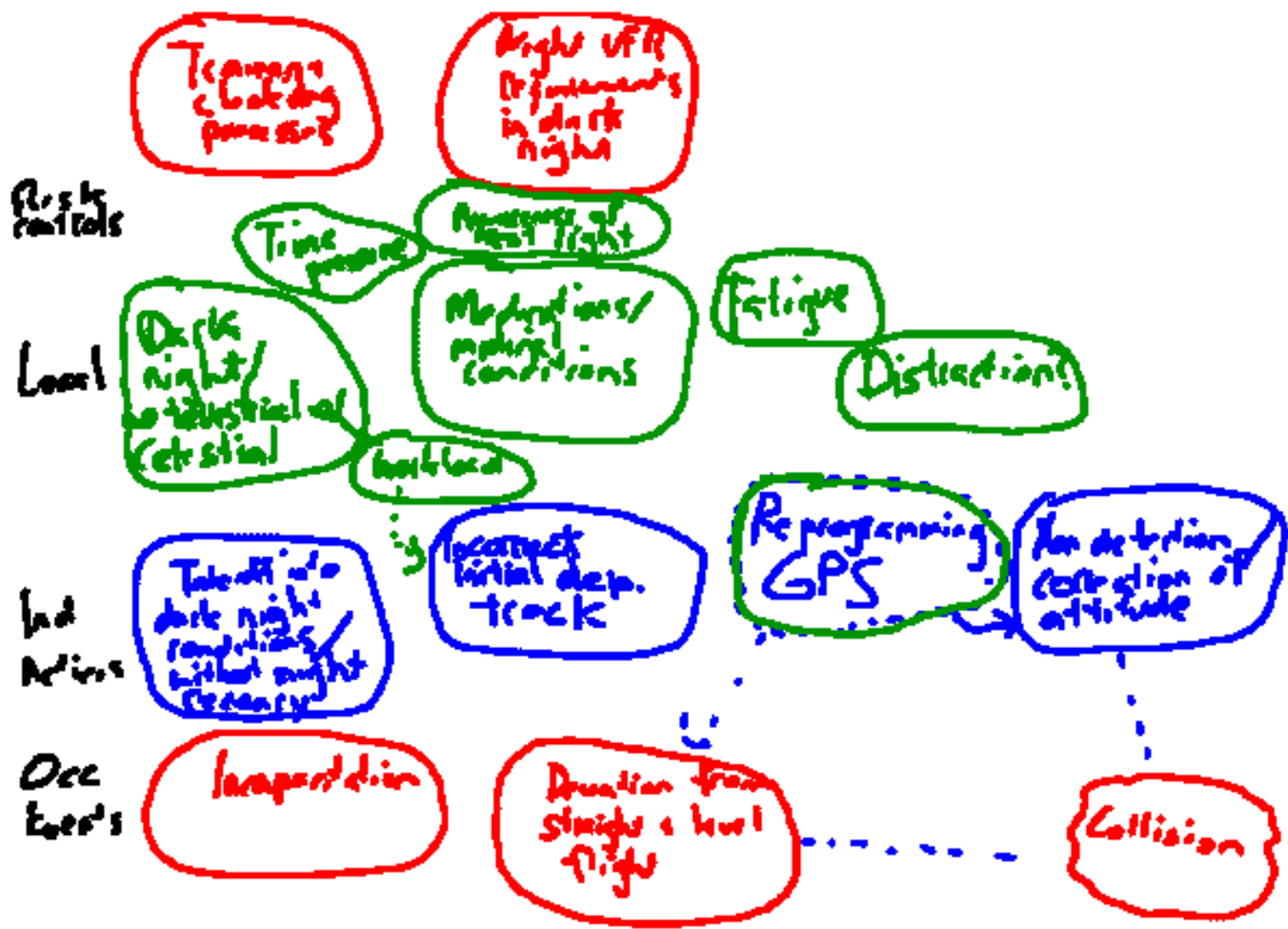
**VH-NTV, AS355**  
**18 Aug 2011**  
**VFR at night**  
**3 POB**











External org influences

Internal org influences

Risk controls

Local conditions

Ind. actions

Occurrence events

Requirements for autopilots in helicopters used at night

Requirements for instrument proficiency in dark night conditions

Operator's processes for managing flights at night

Helicopter did not have autopilot

High workload during turn

Dark night conditions

Limited instrument flying proficiency

Fatigue due long duty day?

Spatial disorientation

Use of inappropriate take-off / landing sites at night

Incorrect fly-to point entered into GPS

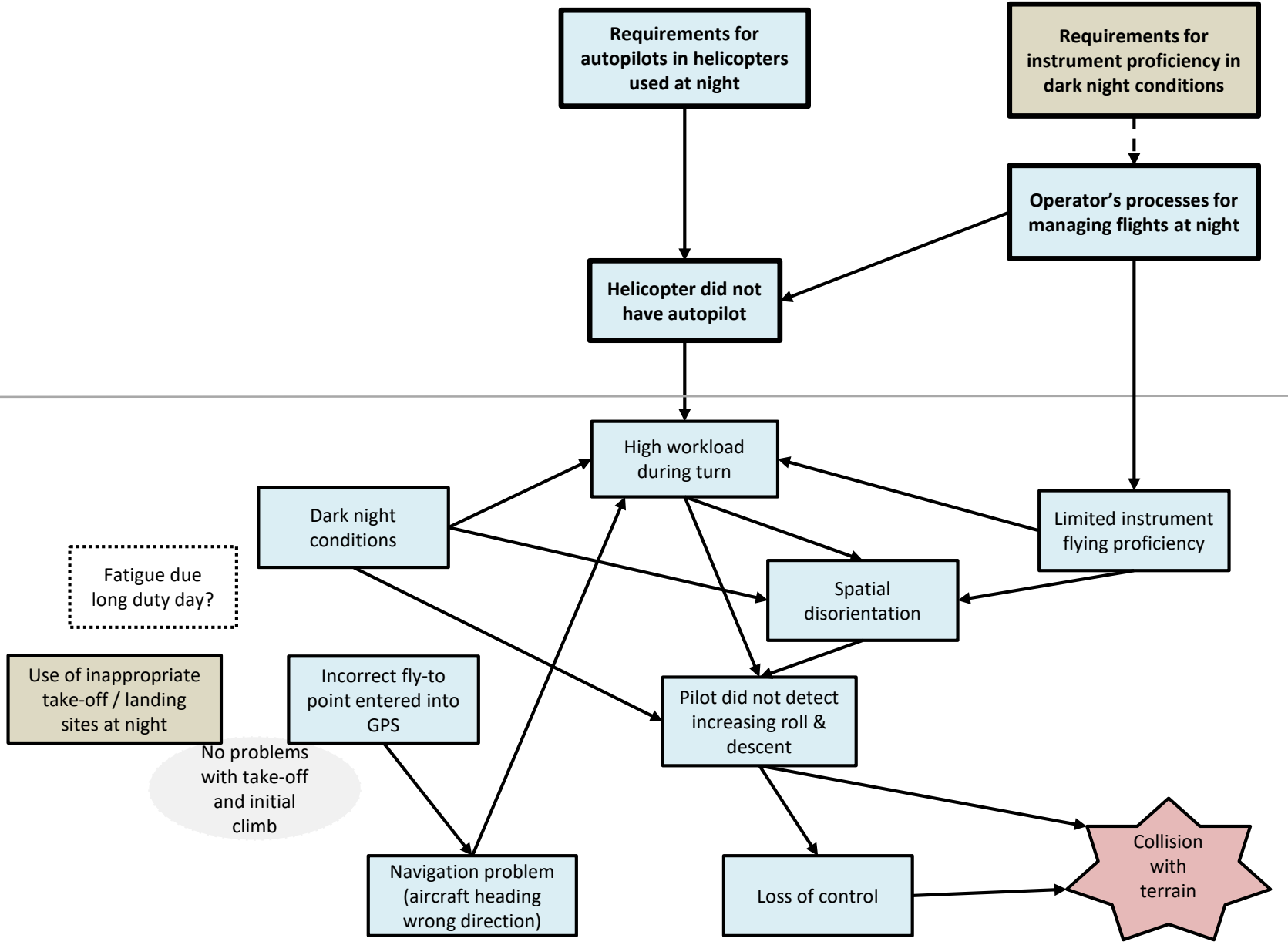
Pilot did not detect increasing roll & descent

No problems with take-off and initial climb

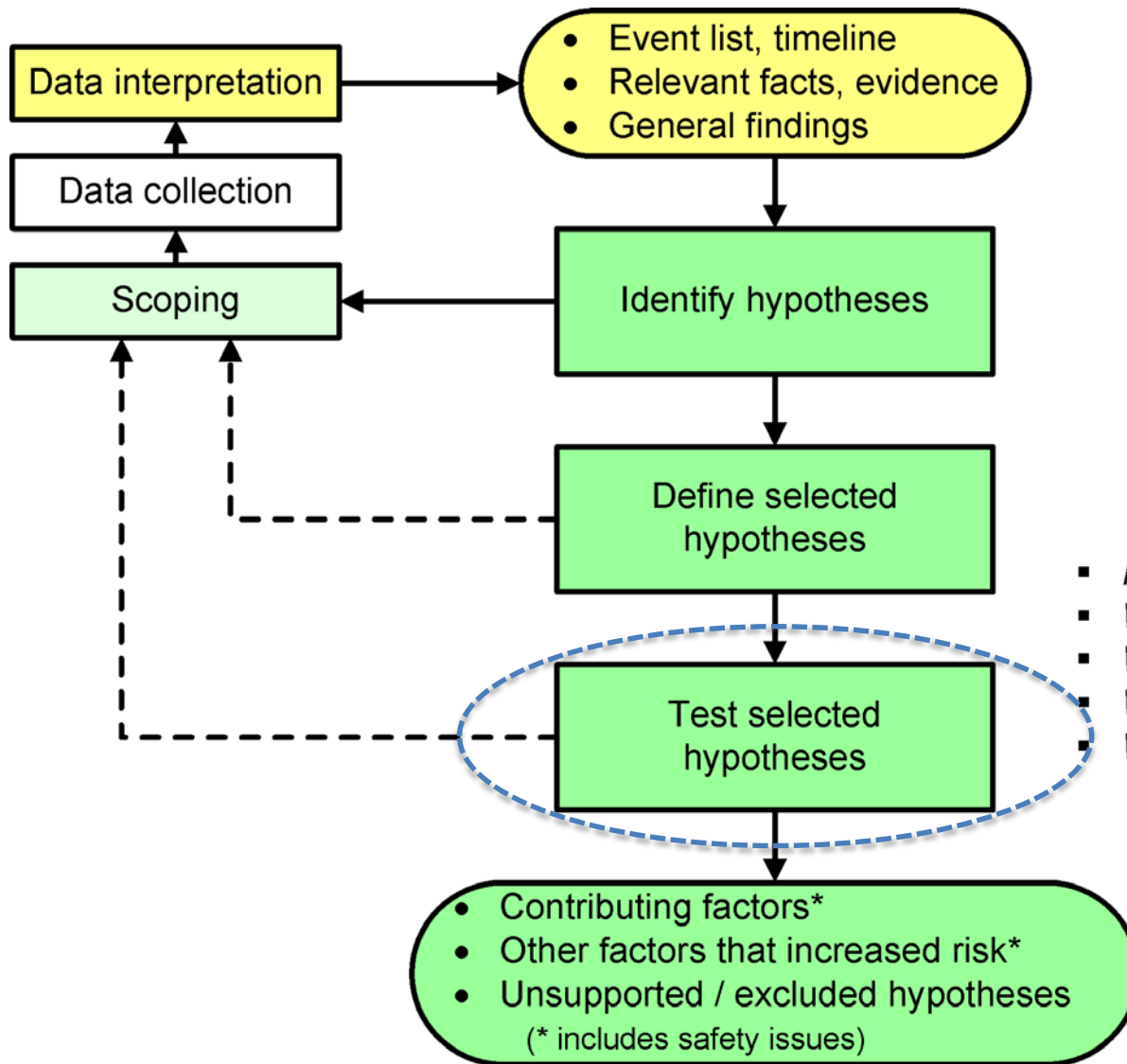
Navigation problem (aircraft heading wrong direction)

Loss of control

Collision with terrain

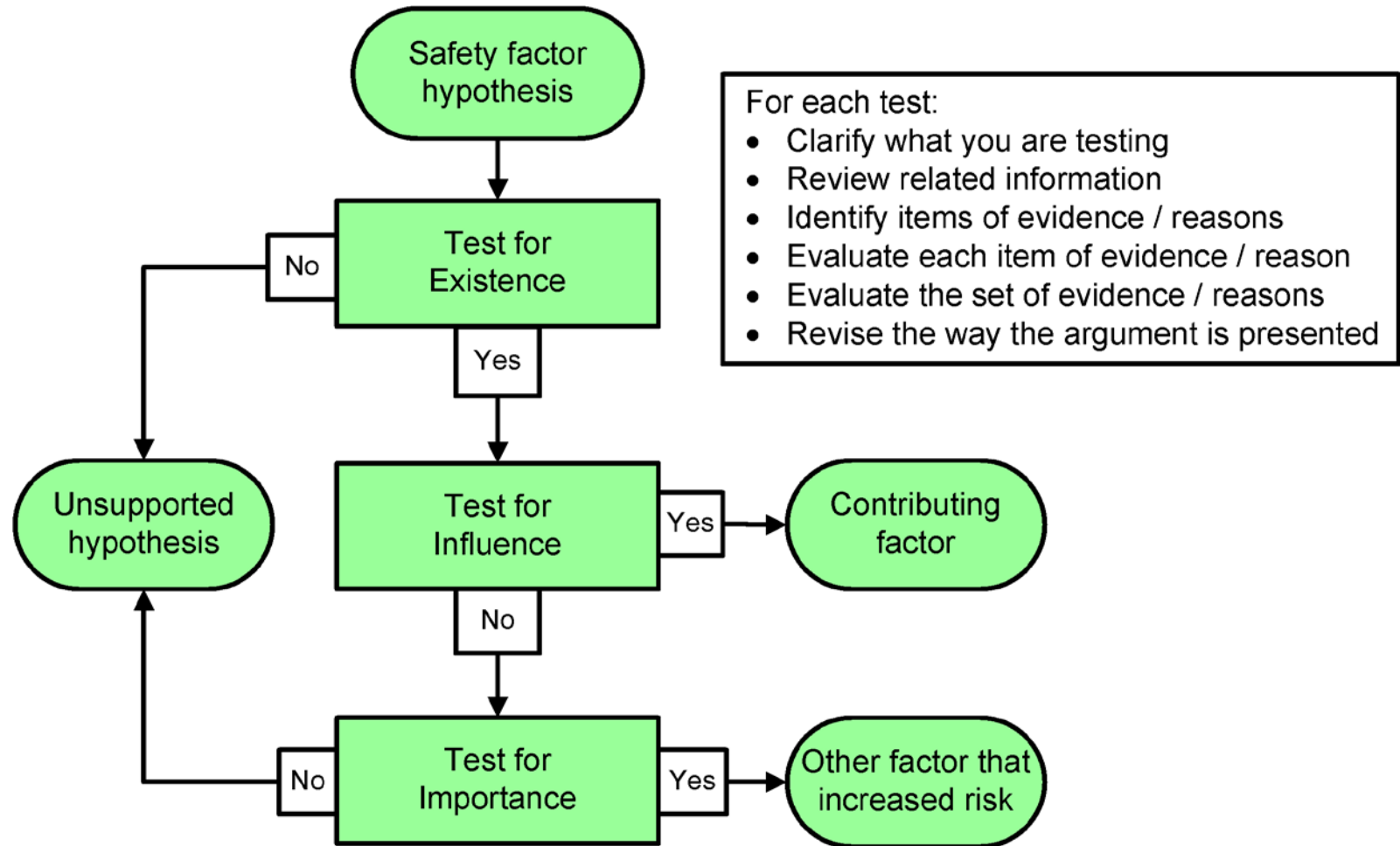


# Safety factors analysis



- *How did the occurrence happen?*
- *Why did it happen?*
- *What contributed?*
- *What else increased risk?*
- *What are the safety issues?*

# Testing a safety factor hypothesis



External org influences

Internal org influences

Risk controls

Local conditions

Ind. actions

Occurrence events

Requirements for autopilots in helicopters used at night

Requirements for instrument proficiency in dark night conditions

Operator's processes for managing flights at night

Helicopter did not have autopilot

High workload during turn

Dark night conditions

Limited instrument flying proficiency

Fatigue due long duty day?

Spatial disorientation

Use of inappropriate take-off / landing sites at night

Incorrect fly-to point entered into GPS

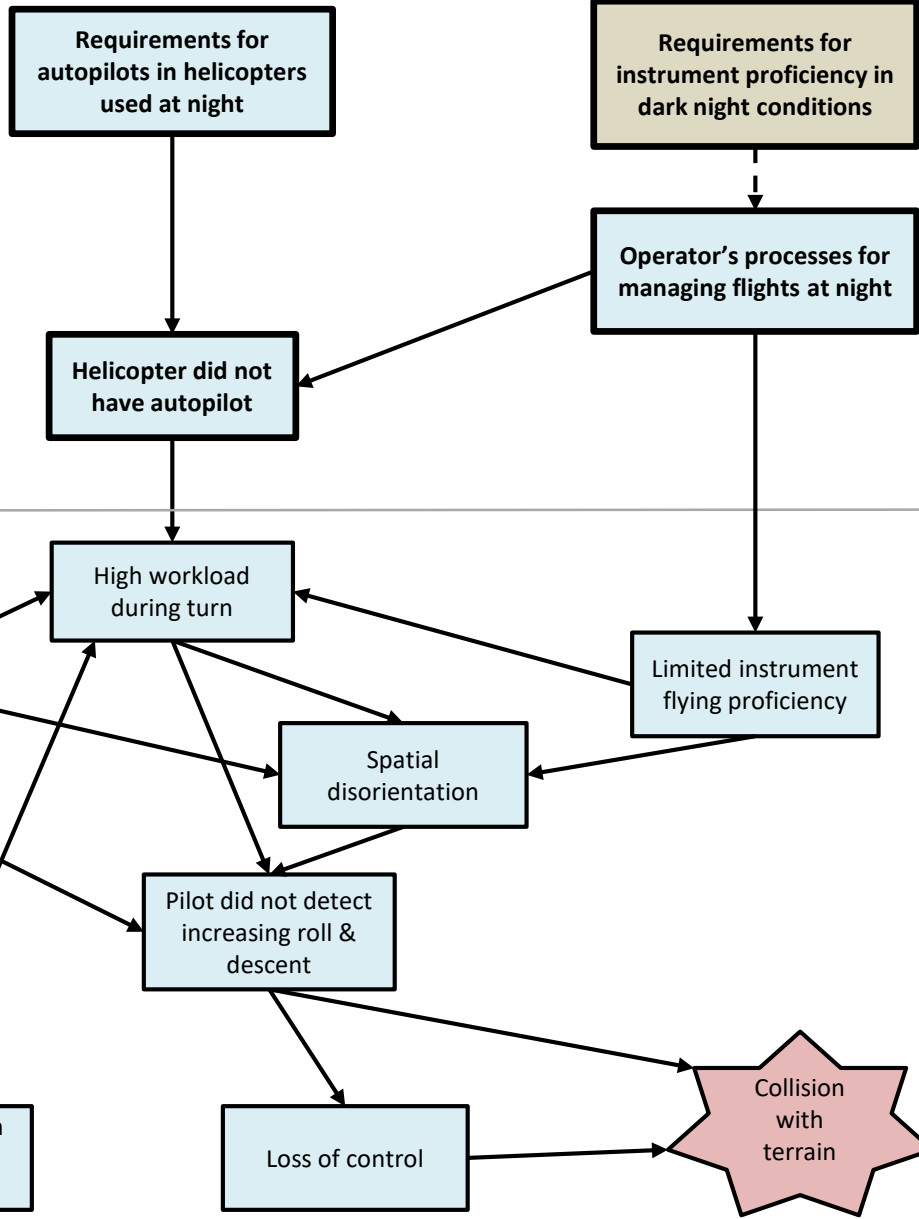
Pilot did not detect increasing roll & descent

No problems with take-off and initial climb

Navigation problem (aircraft heading wrong direction)

Loss of control

Collision with terrain



<b>Safety factor hypothesis</b>	The pilot was experiencing a level of fatigue that has been demonstrated to have an influence on performance.	
<b>Evidence / reason</b>	<b>Strengths / limitations</b>	<b>Rating</b>
Long duty day, first flight starting 0716 with 8 flights (4.3 hours flight time). Previous day 5 flights and 7.5 hours flight time, ending 1637.	Based on GPS. Regular short breaks on day of accident, including prior to accident flight. Flying conditions were not problematic for previous flights.	Supports
8 hours + sleep opportunity night before; at least 7 hours sleep previous night and normal (8 hours, well) nights before that.	Exact sleep in last 24 hours unknown. Sleep for previous nights reported by partner.	Opposes
No-one reported noticing any problems with pilot's health or behaviour.	Pilot interacted with many people, including just prior to accident flight. All reports consistent. Ability to detect fatigue would be limited.	Opposes
Accident at 1900; had been awake at least 12.5 hours.	Time of day not that significant; time awake a concern but not excessive.	No effect
<b>Overall evaluation</b>	No other exacerbating factors. Long duty day is a concern. However, without evidence of affected sleep or high workload with the flights it is difficult to conclude the pilot was experiencing a sufficient level of fatigue.	
<b>Existence?</b>	No	

External org influences

Internal org influences

Risk controls

Local conditions

Ind. actions

Occurrence events

Requirements for autopilots in helicopters used at night

Requirements for instrument proficiency in dark night conditions

Operator's processes for managing flights at night

Helicopter did not have autopilot

High workload during turn

Dark night conditions

Fatigue due long duty day?

Use of inappropriate take-off / landing sites at night

Incorrect fly-to point entered into GPS

No problems with take-off and initial climb

Spatial disorientation

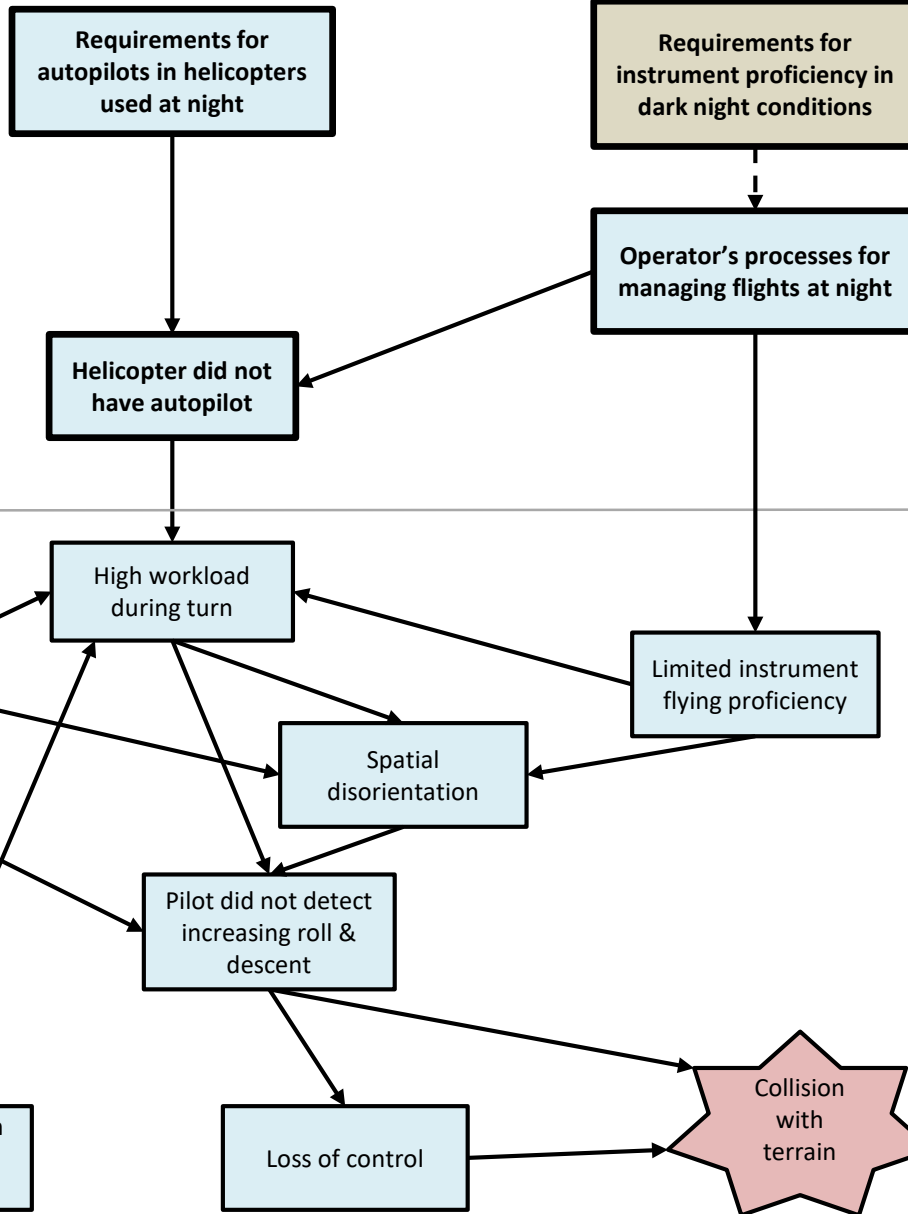
Limited instrument flying proficiency

Pilot did not detect increasing roll & descent

Navigation problem (aircraft heading wrong direction)

Loss of control

Collision with terrain



<b>Safety factor hypothesis</b>	The flight was conducted in dark night conditions, with no visible horizon and minimal celestial and terrestrial lighting.
---------------------------------	--

<b>Evidence / reason</b>	<b>Strengths / limitations</b>	<b>Rating</b>
Some witness reported being able to see some terrain features and the horizon.	Others reported it being dark. May be due to starlight and well adapted. Maybe recalling earlier in night.	Opposes
Geoscience states nautical twilight 1850, astronomical twilight 1917 (accident was 1902).	Very reliable. Means 'it is dark for practical purposes'.	Strongly supports
Geoscience states moon rise 2158.	Very reliable; therefore no celestial lighting. Confirmed by witnesses.	Supports
Witnesses reported no terrestrial light sources in area (other than their camp fire).	Reports all consistent. Confirmed by other sources and visit to the area.	Supports
Ability for dark adaptation reduced due exposure to cockpit lighting, landing lights, and pilot was 60 years old.	Effects of lighting confirmed by reference sources / experienced pilots. Effects of age confirmed by multiple, reputable sources.	Supports

<b>Overall evaluation</b>	Unclear what some witnesses were describing. However, even with starlight available, very unlikely could see terrain features from inside a helicopter.
---------------------------	---

<b>Existence?</b>	Yes
-------------------	-----



<b>Safety factor hypothesis</b>	The flight was conducted in dark night conditions, with no visible horizon and minimal celestial and terrestrial lighting.	
<b>What did it influence?</b>	Spatial disorientation (SD); Ability to recognise descent and increasing bank angle	
<b>Evidence / reason</b>	<b>Strengths / limitations</b>	<b>Rating</b>
No external cues reduces likelihood pilot or passengers could detect descent and increasing bank (plausible mechanism).	Pilot focussed on instruments during initial departure, then probably GPS in turn. Easier to check external cues than instruments for VFR pilot; also peripheral vision useful.	Supports
Many SD accidents with similar flight path have occurred in dark night conditions (co-variation).	Includes helicopters. Also includes multi-crew operations with pilots with instrument ratings.	Supports
If problem was detected, presence of external cues would have made it much easier to regain orientation.	Unclear whether pilot did detect problem or not during the descent.	No effect
<b>Overall evaluation</b>	Sufficient reasons to support influence, and no notable reasons opposing. Limited external cues generally a pre-condition for SD (with other factors). Alternative explanations where external cues not relevant are complicated.	
<b>Influence?</b>	Yes	

### **Existence items**

- Clearly supporting
- Clearly opposing
- Expectations

- 
- Direct observation
  - Symptoms
  - Sources
  - Predictions

- 
- Frequency
  - Relative strength

- 
- Other perspectives
  - Generally relevant

### **Influence items**

- Clearly supporting
- Clearly opposing

- 
- Reversibility
  - Plausibility
  - Covariation
  - Alternative explanations

- 
- Expectations
  - Key aspects

- 
- Timing
  - Location
  - Magnitude
  - Enhancers
  - Inhibitors

- 
- Other perspectives
  - Generally relevant

### **Importance items**

- Risk level (safety issues)
- Risk-related aspects (not safety issues)

- 
- Relationship to change
  - Potential for learning
  - Completeness
  - Consistency
  - Scope
  - Other perspectives

### **Evaluate item**

- Relevance
- Credibility

- 
- Other strengths
  - Other limitations
  - Other perspectives
  - Appropriateness

### **Evaluate set**

- Required assumptions
- Account for all parts
- Extent of support
- Extent of opposition

- 
- Sufficiency
  - Gross error check

# HF investigation challenges

- Everyone thinks they are a HF specialist
- Finding good quality, applied research studies
- Insufficient HF data collected
  - HF investigators not always involved early enough
  - limited HF data collection guidance/tools
- Balancing generalist versus specialist approaches
- Convincing some people that:
  - pilots can sometimes do a very strange thing
  - there can be valid reasons why a pilot does a very strange thing

**Thank you**

**Dank u wel**

[mike.walker@atsb.gov.au](mailto:mike.walker@atsb.gov.au)